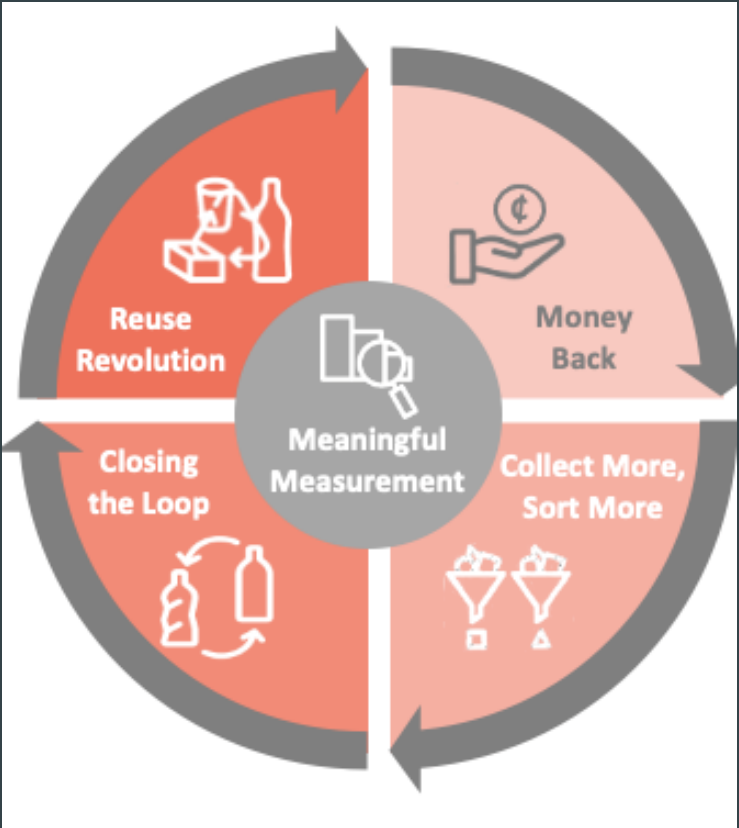


reloop

# Reloop Platform



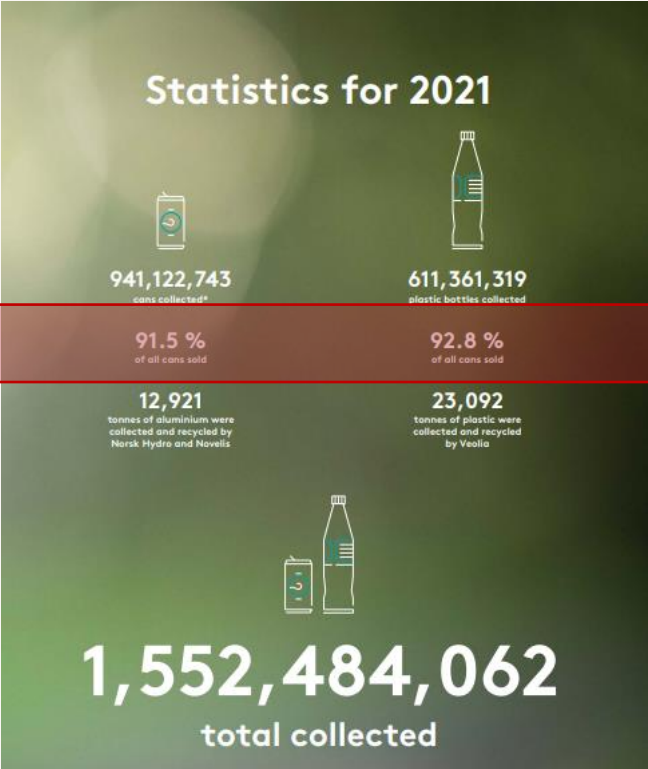
# Principles of an efficient DRS – case Norway

Anna Larsson, Director, Circular Economy Development

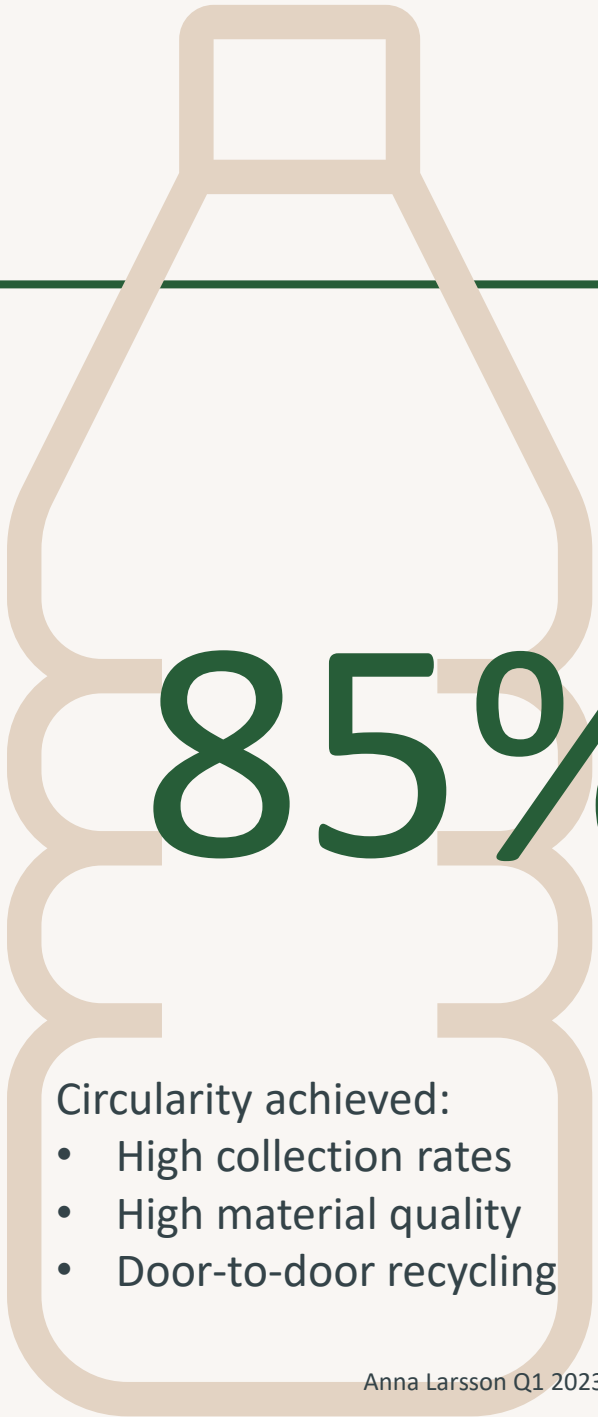
- Secure circularity of beverage packaging
- Maximized collection of recyclables
- Cost efficiency
- Climate neutrality
- Maximized environmental results

# Circularity

reloop



Source: Infinitum 2021 Report



85%

Circularity achieved:

- High collection rates
- High material quality
- Door-to-door recycling

# Norway

Population: 5.4m

Population density: 17.3/km<sup>2</sup>

System operator's website:

OPEN WEBSITE

## Sources

1) Infinitem, "Annual Report 2021." <https://infinitem.no/media/scdgyt3/en-infinitem-ar-rapport-2021-100422-01.pdf>

2) Papineschi, J. Hogg, D. Chowdhury, T. Durrant, C., and A. Thomson. 2019.

## Legislative framework

### Name of legislation

Regulations relating to the recycling of waste (Waste Regulations) under the Product Control Act (Forskrift om gjenvinning og behandling av avfall (avfallsforskriften) – Kapittel 6 Returnssystemer for emballasje til drikkevarer)

### Legislation enacted<sup>1</sup>

December 1993

### Establishment of system operator

November 1996

### System started

1 May 1999

### Key updates

› September 2018 – deposit increase

### Regulatory authority

Norwegian Environment Agency

### Legislated targets<sup>2</sup>

The system is expected to achieve a minimum 25% return rate. To be exempt from the environmental tax on drinks packaging, the return rate for cans and plastic bottles must be 95%.

## Scope

### Material type

Plastic (predominantly PET), metal (aluminium, tinplate)

### Beverage type

All (the regulation does not specify the types of drinks covered by DRS)

## Deposits & fees

### Deposit initiator

Producer/Importer

### Deposit value

› Variable rate:

› Plastic, metal <0.5L (0.13 gal): 2 NOK (€0.20, USD\$0.22)

› Plastic, metal ≥ 0.5L (0.13 gal): 3 NOK (€0.30, USD\$0.33)

### Handling fee (2022)

› RVM with compaction:

› Plastic: 0.25 NOK (€0.03, USD\$0.03)

› Metal: 0.20 NOK (€0.02, USD\$0.02)

› Manual or RVM without compaction:

› Plastic: 0.10 NOK (€0.01, USD\$0.01)

› Metal: 0.05 NOK (€0.01, USD\$0.01)

### Producer fee (2022)

› Aluminium: -0.06 NOK (-€0.0063, -USD\$0.0069)

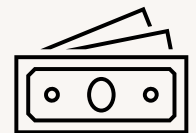
› Steel: 0.21 NOK (€0.02, USD\$0.024)

› PET: 0.14 NOK (€0.015, USD\$0.016)

› HDPE: 0.14 NOK (€0.015, USD\$0.016)

In addition to producer fees, producers wanting to join the Infinitem system are required to pay a one-time registration fee for the company and a fee for each new packaged product placed on the market.

COSTS FOR  
PRODUCERS  
AND  
IMPORTERS



MONEY BACK  
for alu cans !!!

- Non for profit environment public service  
(like majority of the existing DRS in Europe)
- Net costs principle  
(Art 8a WFD implemented)
- Balanced ownership structure: 50% retail – 50% producers
- Optimized logistics

# DRS OPEX



The operational cost of the deposit system is covered by the system operator and includes:

- Handling fees (for the collection service performed by the retailers)
- Transport and logistics
- Administration and marketing

Updated handling fees can be found here:

<https://www.reloopplatform.org/wp-content/uploads/2020/04/Fact-Sheet-Handling-Fees-6April2020.pdf>

DRS operator's incomes include:

- Sales of recyclables (recyclables are the ownership of the system operator)
- Unredeemed deposit
- Put to market fees

Net costs principle is applied







*“Playing a part in designing the best deposit return system in the world is definitely one of the things I am most proud of in my career.”*

Espen Langtvet

reloop

resources  
remain  
resources

---

[www.reloopplatform.org](http://www.reloopplatform.org)